

SECTION 00 91 11.02

ADDENDUM NUMBER 3

1.01 PARTICULARS

- A. DATE: October 9, 2009
- B. PROJECT: Hazel Mackin Community Library
- C. PROJECT NUMBER: R2216
- D. OWNER: Village of Roberts
- E. ARCHITECT: Building With Architects, LLC

2.01 TO: Prospective Bidders

- A. This Addendum forms a part of the Contract Documents and modifies the Bidding Documents dated September 24, 2009, with amendments and additions noted below.
- B. Acknowledge receipt of this Addendum in the space provided in the Bid Form. Failure to do so may disqualify the Bidder.
- C. This Addendum consists of four pages and six attachment.

2.02 Deposit checks: Documents shall be returned to Village of Roberts. All deposit checks will be available at Village Hall October 13, 2009.

2.03 Architect will be out of office October 12 through 28, 2009. May be able to respond to email inquiries within 2-3 days.

2.04 CHANGES TO THE PROJECT MANUAL

- A. TABLE OF CONTENTS
 - 1. Add the following section:
 - a. SECTION 07 13 00 - SHEET WATERPROOFING
- B. SECTION 07 13 00 - SHEET WATERPROOFING
 - 1. Include this section in project.
- C. SECTION 07 21 00 - THERMAL INSULATION
 - 1. 2.03 ACCESSORIES
 - a. Delete paragraph E. Foundation Insulation Protection. There is no exposed foundation insulation on the project.
- D. SECTION 00 41 00 - BID FORM
 - 1. 1.09 BID FORM SUPPLEMENTS
 - a. Delete paragraph 1.
 - b. Paragraph 1. should read: Section 00 43 23 Alternates: Include the cost variations to the Bid Sum applicable to the Work.
 - 2. 2.03 WOOD VENEER CEILING UNITS
 - a. Add Architectural Components Group, Inc. Linear Wood Ceiling System
 - b. Add Norton Industries Linear Plank Ceiling

3.01 CHANGES TO THE SHEETS

- A. DRAWING 3-1
 - 1. Detail 1/3-1 Community Room 13. Frame F13 changes size. See attachment.
 - 2. Detail 1/3-1 Staff Toilet 18. Change toilet type to wall hung and wall type as shown on attachment.
- B. DRAWING S1
 - 1. Add detail cut 5/S7 and 6/S7.
 - 2. At CMU wall along grid B, between grids 1 & 1.7, add note indicating #5 vertical reinforcing at 24" o.c.
 - 3. Add plan note #26 thus: "See 4/S7 for conc. stair detail."
- C. DRAWING S2
 - 1. Add detail cuts 7/S7 and 8/S7 at 1/S2.
 - 2. Add joist designation information at reading room roof area.
 - 3. Add detail cut 11/S5 sim at 2/S2.
- D. DRAWING S5
 - 1. Add sim. note to detail 11/S5.
- E. DRAWING S7
 - 1. Add details 4/S7, 5/S7, 6/S7, 7/S7 and 8/S7.
- F. DRAWING 6-1
 - 1. Door Schedule
 - a. Door 19B is a hollow metal door not wood as indicated.

3.02 ATTACHMENTS

- A. Drawing 8.x11 a-3 1 Frame change Dated 10/9/09
- B. Drawing 8.x11 a-3 2 Staff Toilet Dated 10/9/09
- C. Drawing 24x36 S1 Foundation Plan Dated 10/9/09
- D. Drawing 24x36 S2 Main Roof Framing Plan Dated 10/9/09
- E. Drawing 24x36 S5 Details Dated 10/9/09
- F. Drawing 24x36 S7 Details Dated 10/9/09

END OF SECTION

SECTION 07 13 00

SHEET WATERPROOFING

PART 1 GENERAL

1.01 SECTION INCLUDES

- A. Sheet membranewaterproofing.

1.02 RELATED REQUIREMENTS

1.03 REFERENCE STANDARDS

- A. ASTM D 412 - Standard Test Methods for Vulcanized Rubber and Thermoplastic Elastomers-Tension; 2006a.
- B. ASTM D 570 - Standard Test Method for Water Absorption of Plastics; 1998 (Reapproved 2005).

1.04 SUBMITTALS

- A. See Section 01 30 00 - Administrative Requirements, for submittal procedures.
- B. Product Data: Provide data for membrane.
- C. Manufacturer's Installation Instructions: Indicate special procedures.
- D. Warranty: Submit manufacturer warranty and ensure forms have been completed in Village of Roberts's name and registered with manufacturer.

1.05 QUALITY ASSURANCE

- A. Membrane Manufacturer Qualifications: Company specializing in waterproofing sheet membranes with three years experience.
- B. Installer Qualifications: Company specializing in performing the work of this section with minimum three years experience.

1.06 WARRANTY

- A. See Section 01 78 00 - Closeout Submittals, for additional warranty requirements.
- B. Contractor shall correct defective Work within a five year period after Date of Substantial Completion; remove and replace materials concealing waterproofing at no extra cost to Village of Roberts.
- C. Provide five year manufacturer warranty for waterproofing failing to resist penetration of water, except where such failures are the result of structural failures of building. Hairline cracking of concrete due to temperature change or shrinkage is not considered a structural failure.

PART 2 PRODUCTS

2.01 MANUFACTURERS

- A. W. R Grace; Product Bituthene 3100.

2.02 MEMBRANE MATERIALS

- A. Sheet Waterproofing - General: Laminated composite membrane, adhesive bonded.
 - 1. Capable of resisting water head of 150 feet and preventing moisture migration to interior.
- B. Composite Laminate Membrane: Comprised of .056 inch thickness of rubberized-asphalt and a .004f inch thickness of cross-laminated polyethylene film; .060 inch total thickness.
 - 1. Sheet Width: 36 inch, minimum.

2. Tensile Strength: 250 psi, measured in accordance with ASTM D 412.
 3. Ultimate Elongation: 300 percent, measured in accordance with ASTM D 412.
 4. Water Absorption: 0.1 percent increase in weight, maximum, measured in accordance with ASTM D 570, 24 hour immersion.
- C. Surface Conditioner: Liquid type, compatible with membrane.
- D. Thinner and Cleaner: As recommended by adhesive manufacturer, compatible with sheet membrane.

2.03 ACCESSORIES

- A. Flexible Flashings: Type recommended by membrane manufacturer.

PART 3 EXECUTION

3.01 EXAMINATION

- A. Verify existing conditions before starting work.
- B. Verify substrate surfaces are durable; free of matter detrimental to adhesion or application of waterproofing system.
- C. Verify that items that penetrate surfaces to receive waterproofing are securely installed.

3.02 PREPARATION

- A. Clean and prepare surfaces to receive waterproofing in accordance with manufacturer's instructions.
- B. Seal cracks and joints with sealant using depth to width ratio as recommended by sealant manufacturer.
- C. Surfaces for Adhesive Bonding: Apply surface conditioner at a rate recommended by manufacturer. Protect conditioner from rain or frost until dry.

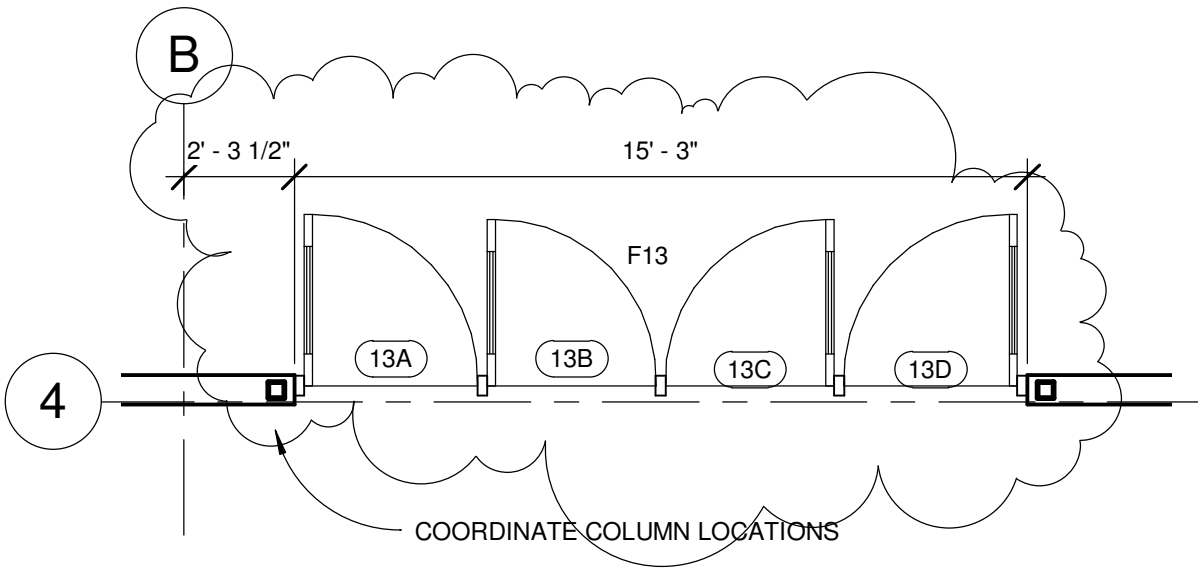
3.03 INSTALLATION - MEMBRANE

- A. Install membrane waterproofing in accordance with manufacturer's instructions.
- B. Roll out membrane. Minimize wrinkles and bubbles.
- C. Self-Adhering Membrane: Remove release paper layer. Roll out on substrate with a mechanical roller to encourage full contact bond.
- D. Overlap edges and ends and seal by method recommended by manufacturer, minimum 3 inches. Seal permanently waterproof. Apply uniform bead of sealant to joint edge.
- E. Reinforce membrane with multiple thickness of membrane material over joints, whether joints are static or dynamic.
- F. Weather lap joints on sloped substrate in direction of drainage. Seal joints and seams.
- G. Install flexible flashings. Seal items penetrating through membrane with flexible flashings. Seal watertight to membrane.
- H. Seal membrane and flashings to adjoining surfaces.

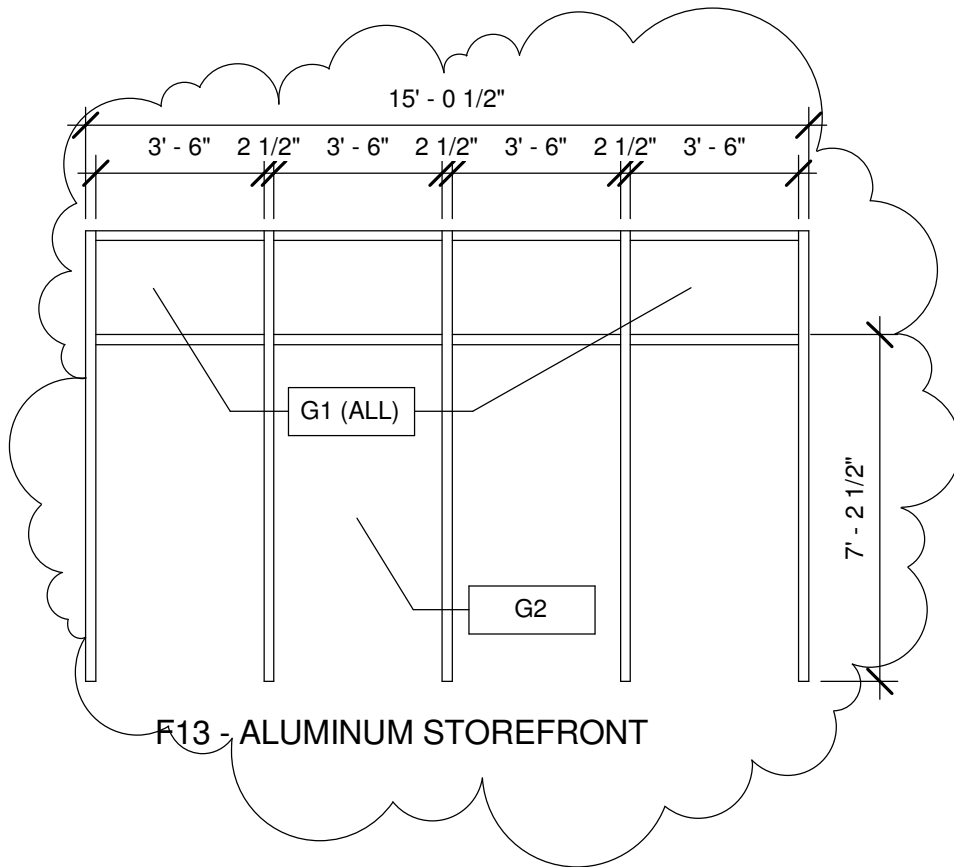
3.04 SCHEDULE

- A. Foundation Wall: One ply of CPE membrane waterproofing; adhesive applied.

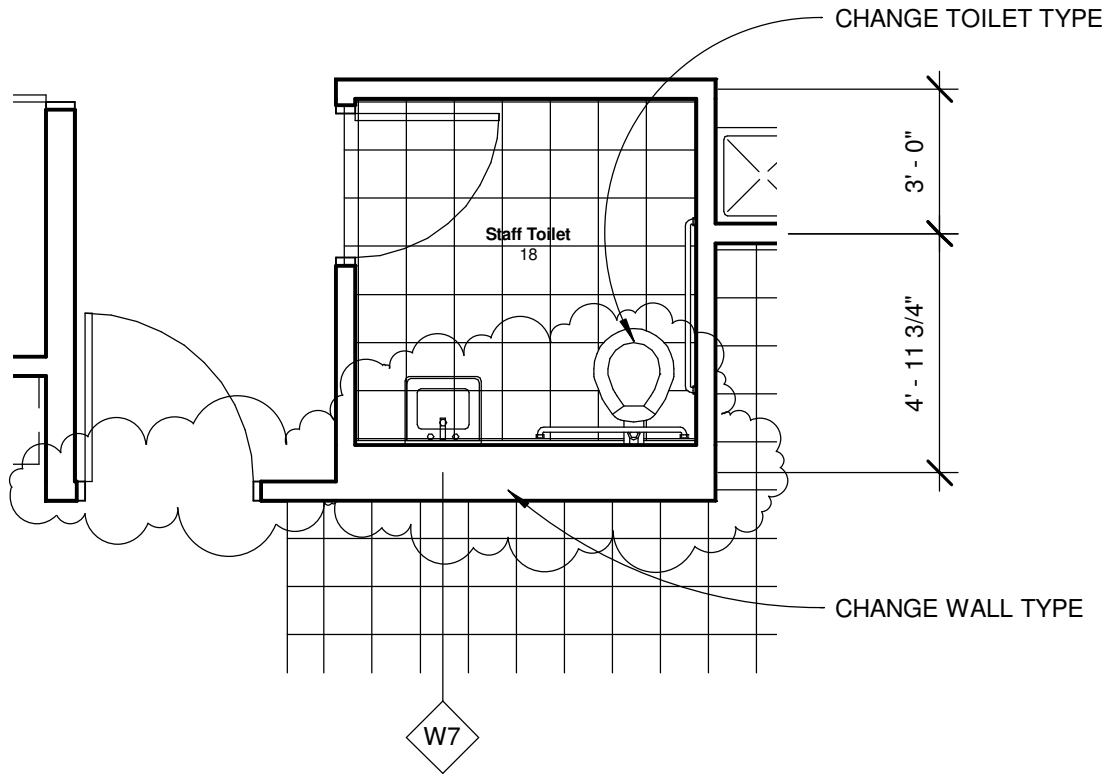
END OF SECTION



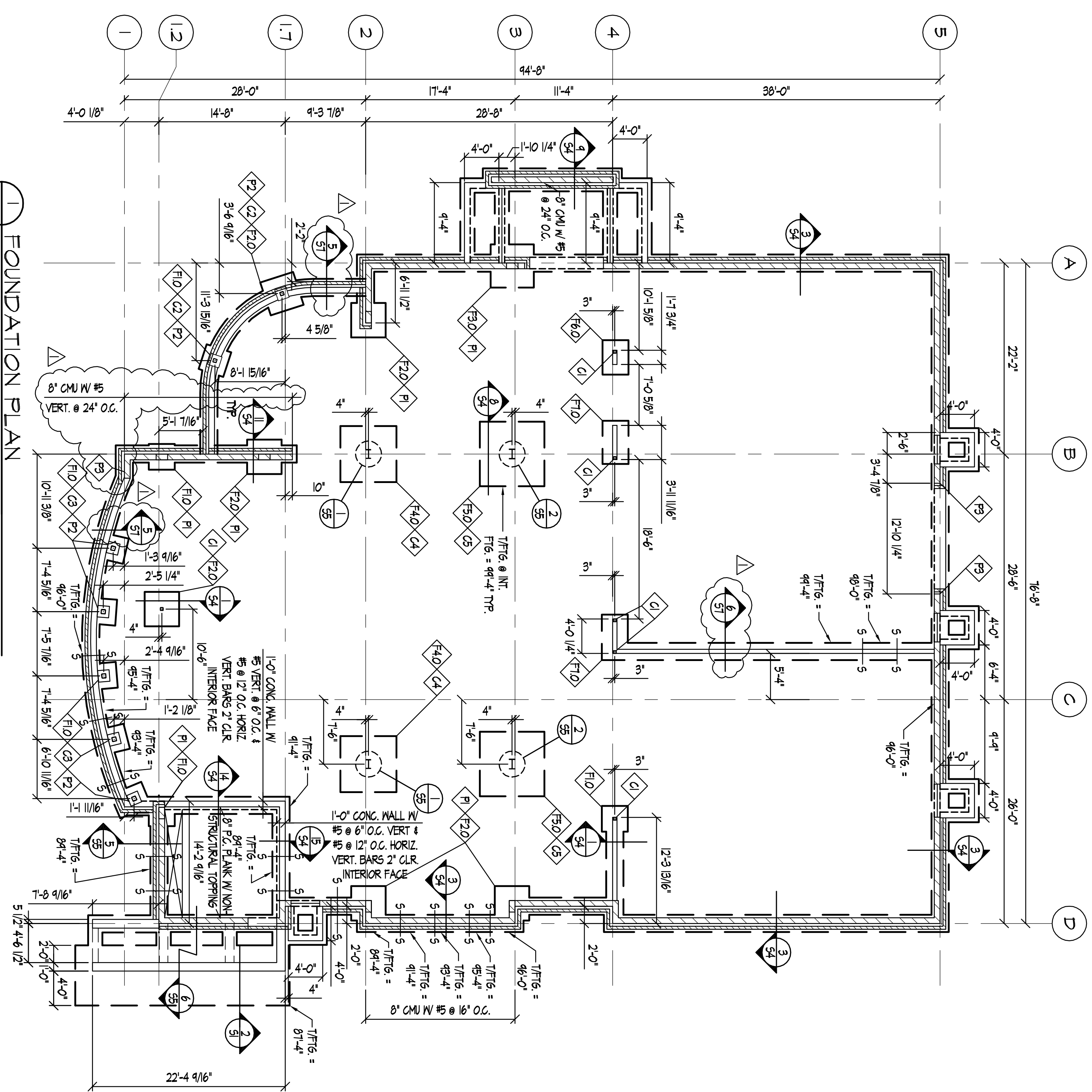
1 a/3 F13 Change
 a/3 1 1/4" = 1'-0"



a/3 F13
 1/4" = 1'-0"



1 a/3 Staff Toilet
a/3 2 1/4" = 1'-0"



1 FOUNDATION PLAN
SCALE: 1/8" = 1'-0"

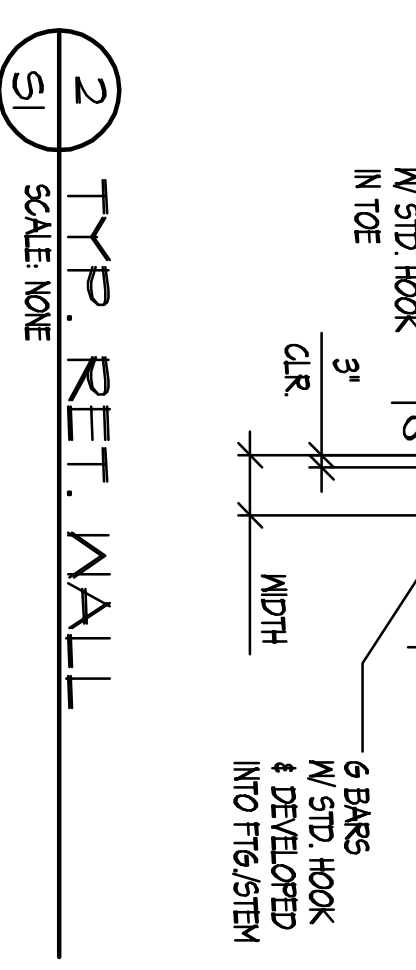
FOOTING SCHEDULE	
MARK #	SIZE & REINFORCING
F10	3'-0" x 3'-0" x 1'-0" CONG. FTG. W/ (8) #5 EA. MAT BOT.
F20	4'-0" x 4'-0" x 1'-0" CONG. FTG. W/ (4) #5 EA. MAT BOT.
F30	5'-0" x 5'-0" x 1'-0" CONG. FTG. W/ (4) #5 EA. MAT BOT.
F40	6'-6" x 6'-6" x 1'-0" CONG. FTG. W/ (1) #5 EA. MAT BOT.
F50	1'-6" x 1'-6" x 1'-3" CONG. FTG. W/ (8) #5 EA. MAT BOT.
F60	3'-0" x 4'-0" x 1'-0" CONG. FTG. W/ (4) #5 TRANSVERSE & (3) #5 LONGITUDINAL.

COLUMN SCHEDULE	
MARK #	SIZE & BASE PLATE
C1	#5 4x4x1/4 W/ 3/4" x 10" x 10" BASE PL. W/ (4) 3/4" x 11" BOLTS
C2	#5 5.5x5.4 W/ 3/4" x 11" x 11" BASE PL. W/ (4) 3/4" x ANCH. BOLTS
C3	#5 6.6x6.2 W/ 3/4" x 12" x 12" BASE PL. W/ (4) 3/4" x ANCH. BOLTS
C4	#5 8.0x8.0 W/ 1/2" x 12" x 20" THROD RODS W/ MIN. 12" EMBED TO HANGER & NUT
C5	#5 8.0x8.0 W/ 1/2" x 12" x 20" THROD RODS W/ MIN. 12" EMBED TO HANGER & NUT

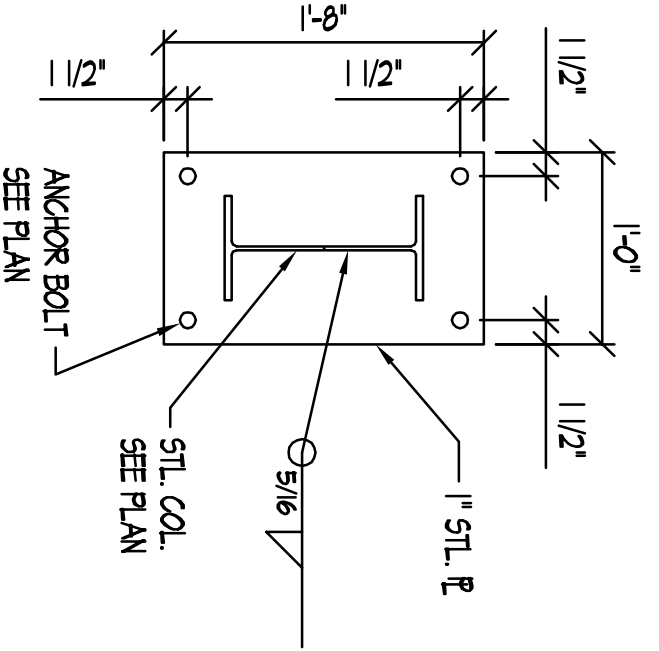
PIER SCHEDULE	
MARK #	SIZE & REINFORCING
P1	8x8 CMU PIER W/ (4) #5 VERT. - (2) EA. CORE - W/ 1/4" #5 TIES @ 8' O.C.
P2	16x16 CONG. PIER W/ (4) #5 VERT. - (2) EA. CORE - W/ 1/4" #5 TIES @ 8' O.C.
P3	8x24 CMU PIER W/ (2) #5 VERT. - (4) EA. CORE - W/ 1/4" #5 TIES @ 8' O.C. SEE DETAIL 3155

RETAINING WALL SCHEDULE														
REINFORCING SCHEDULE														
WALL TYPE	STEM	TOE	HEEL	FIG.	A BARS	B BARS	C BARS	D BARS	E BARS	F BARS				
1	1'-0"	2'-0"	4'-0"	13'	#5 @ 8"	---	#5 @ 12"	#5 @ 8"	(1) #5 BARS EQ. SPACED	#5 @ 8"	2'-1"	NO KEY	---	---

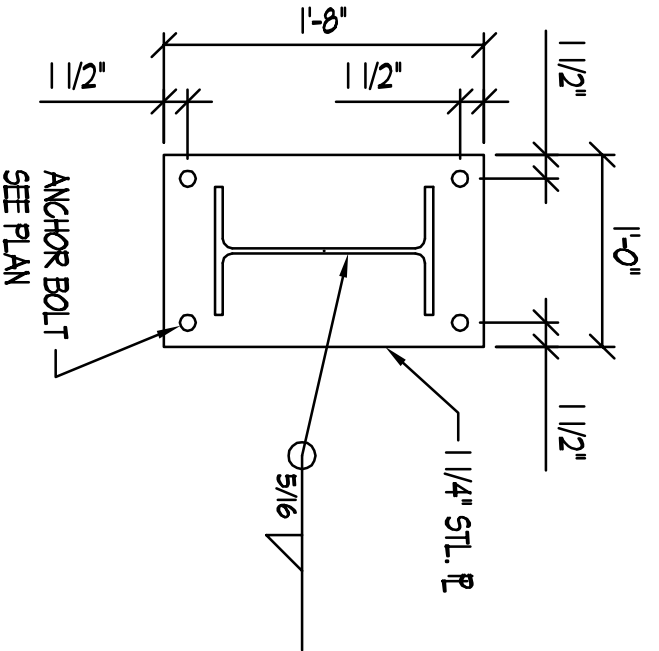
- FOUNDATION PLAN:
- COORDINATE THIS DRAWING WITH ALL OTHER CONTRACT DOCUMENTS. IF DISCREPANCIES ARE NOTED CONTRACTOR SHALL RESOLVE PRIOR TO COMMENCEMENT OF CONSTRUCTION.
 - CMU WALLS: 8"/16" CMU W/ #5 @ 48" O.C. VERT. 1/10" BARS CENTERED IN 8" CMU WALL.
 - TRP. FIG. 2'-0" x 1'-0" W/ (2) #5 CONT. VERT. IN 4'-0" HORIZ.
 - COORDINATE FOOTING STEPS W/ ARCHITECT. MAX. STEP 2'-0"
 - TRP. INT. FINISH SLAB EL. = 100'-0" VERT. W/ ARCH.
 - BASEMENT TOP OF SLAB ELEVATION = 91'-8" VERT. W/ ARCH.
 - MEAL BASEMENT SLAB 4" CONG. W/ 6x6- W/ 2x12x1 WVF.
 - TRP. INT. SLAB 4" CONG. W/ 6x6- W/ 4x14 WVF.
 - TRP. INT. SLAB @ COLLECTION AREAS 5" CONG. W/ 6x6- W/ 2x12x1 WVF. COORDINATE LOCATIONS W/ ARCHITECT.
 - VERIFY ALL DIMENSIONS W/ ARCHITECT.
 - F10, F20, ETC. INDICATES FOOTING TYPE. SEE SCHEDULE.
 - C1, C2, ETC. INDICATES COLUMN TYPE. SEE SCHEDULE.
 - 5-5 INDICATES FOOTING STEP. SEE DETAIL 2154 FOR INFORMATION.
 - FOR TRP. SLAB JOINT DETAIL. SEE 4154.
 - FOR TRP. COLUMN ISOLATION JOINTS DETAIL. SEE 5154 & 6154.
 - FOR TRP. FLOORING REINFORCING LAYOUT AT DISCONTINUITIES SEE 1154.
 - FOR TRP. BOARD BEAM REINFORCING LAYOUT AT DISCONTINUITIES SEE 1254.
 - INTERIOR STL. STUDS 6x10 @ 16'-0" (6' - 16' GAUGE) @ 24" O.C.
 - 20' BOT. STL. STUD TRACK 6x10 @ 16'-0" (6' - 16' GAUGE) @ 24" O.C. FASTENED TO FOUNDATION WALL W/ 1/2" DIA. ANCHOR BOLTS @ 48" O.C. EXTENDING A MIN. OF 4" INTO CONG. FTG.
 - SEE 4155 FOR BULL-TIP STUD ASSEMBLIES.
 - EXT. GRADE ASSIGNED AS 94'-6" VERT.
 - SHEARWALL REQUIREMENTS (SEE 4156 FOR ADD. INFO.):
 - STUDS DOUBLED BACK-TO-BACK @ SHEARWALL ENDS.
 - MIN. 1/2" GFRPM BOARD EA. FACE OF STUDS.
 - FASTEN TO STUDS W/ #6 SCREWS (MIN.) @ 1' O.C. AT PANEL EDGES & 1' O.C. IN THE FIELD.
 - PROVIDE A639 GRADE 50 HORIZONTAL STEEL STRAP BLOKING @ PANEL EDGES. 1/2" (MIN.) WIDE AND THICKNESS EQUAL OR GREATER THAN THE TRACK OR STUDS.
 - FOR TYPICAL STUOP DETAIL SEE 10154.
 - SEE 2151 FOR RET. WALL DETAIL & SCHEDULE.
 - SEE 4151 FOR CONG. STAIR DETAIL.



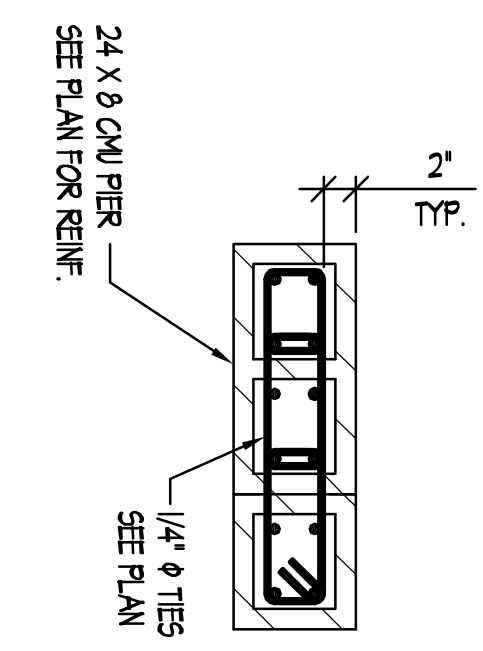
2 TYP. RET. WALL
SCALE: NONE



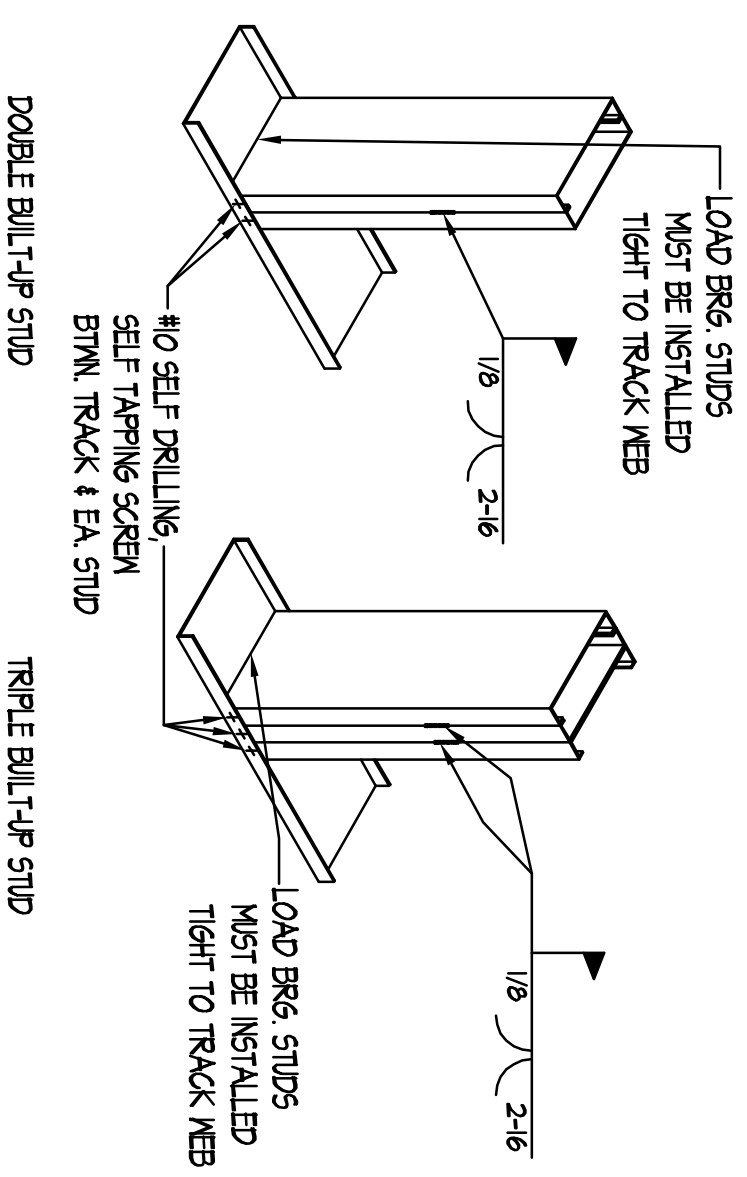
1 M12X30 STL. COL. BASE PLATE CONN. SCALE: 1/2" = 1'-0"



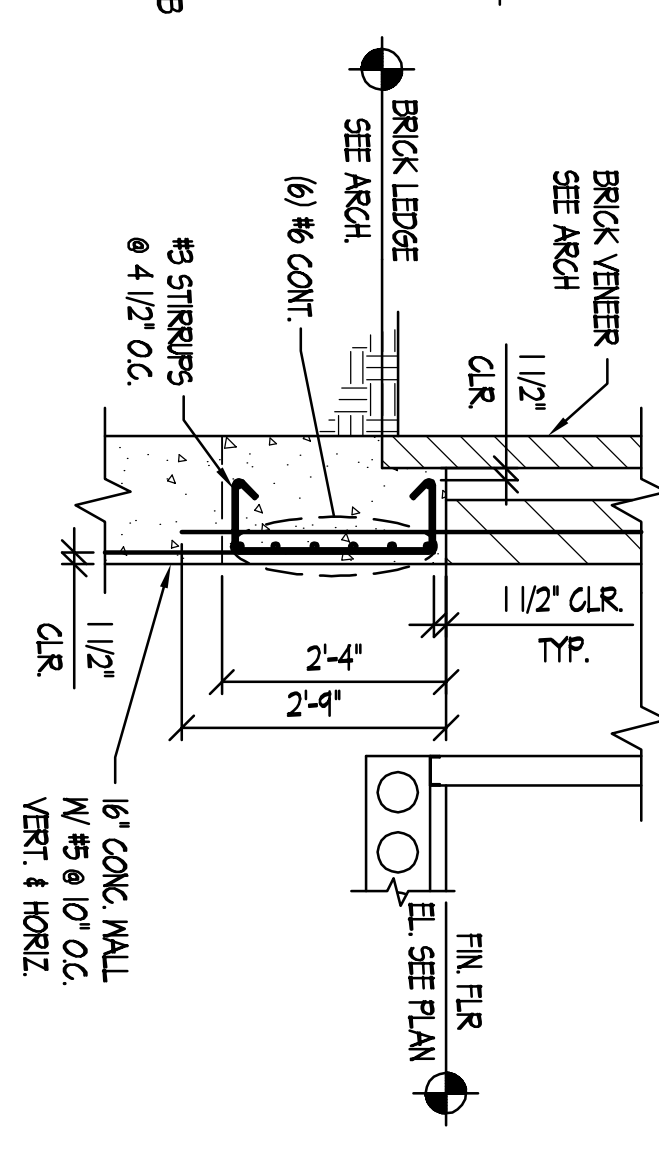
2 M14X43 STL. COL. BASE PLATE CONN. SCALE: 1/2" = 1'-0"



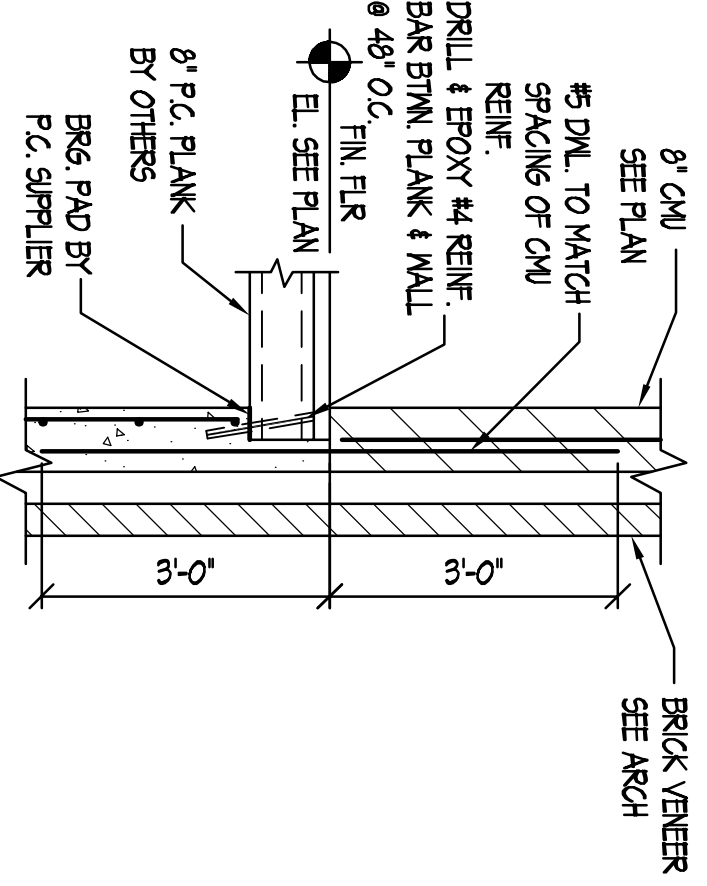
3 24 X 8 CMU PIER SCALE: 1/2" = 1'-0"



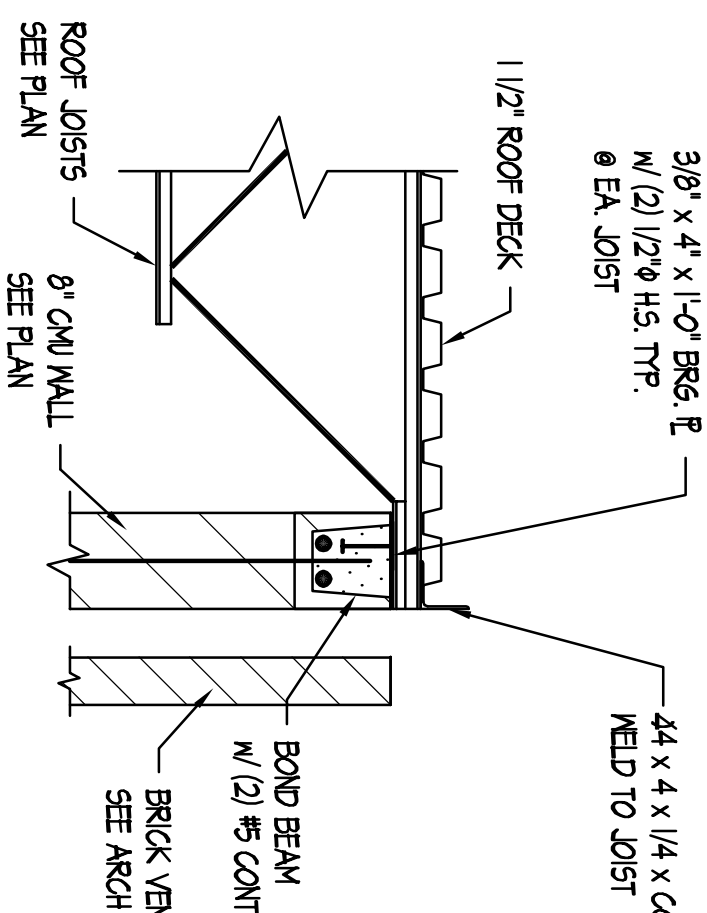
4 BUILT-UP MEMBER CONN. SCALE: 3/4" = 1'-0"



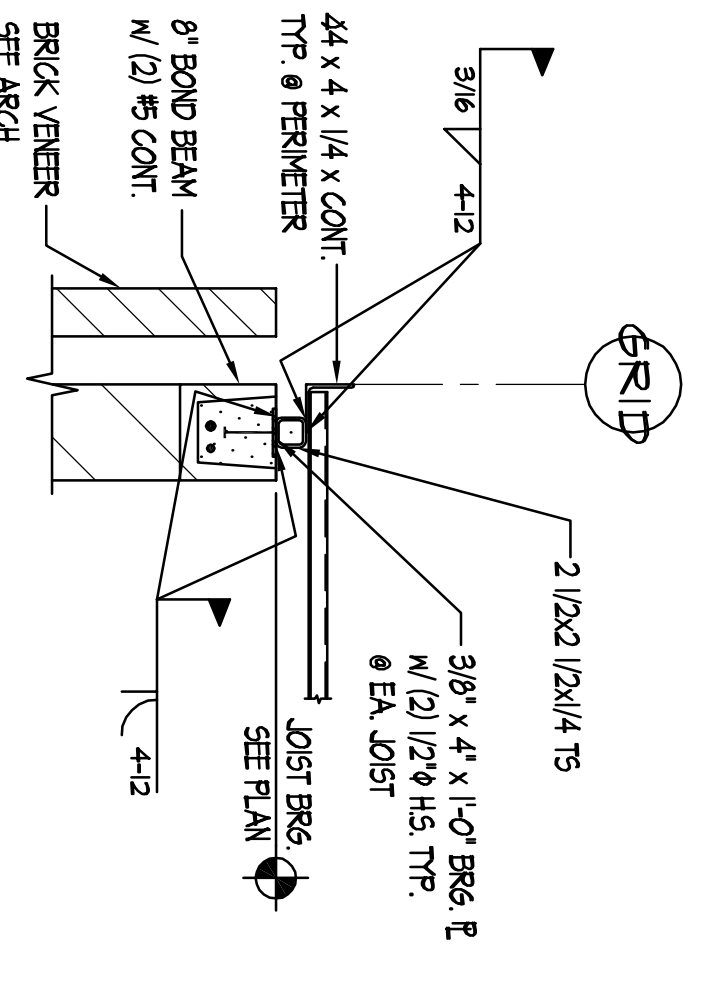
5 FNDTN WALL @ MECH. CHASE SCALE: 1/2" = 1'-0"



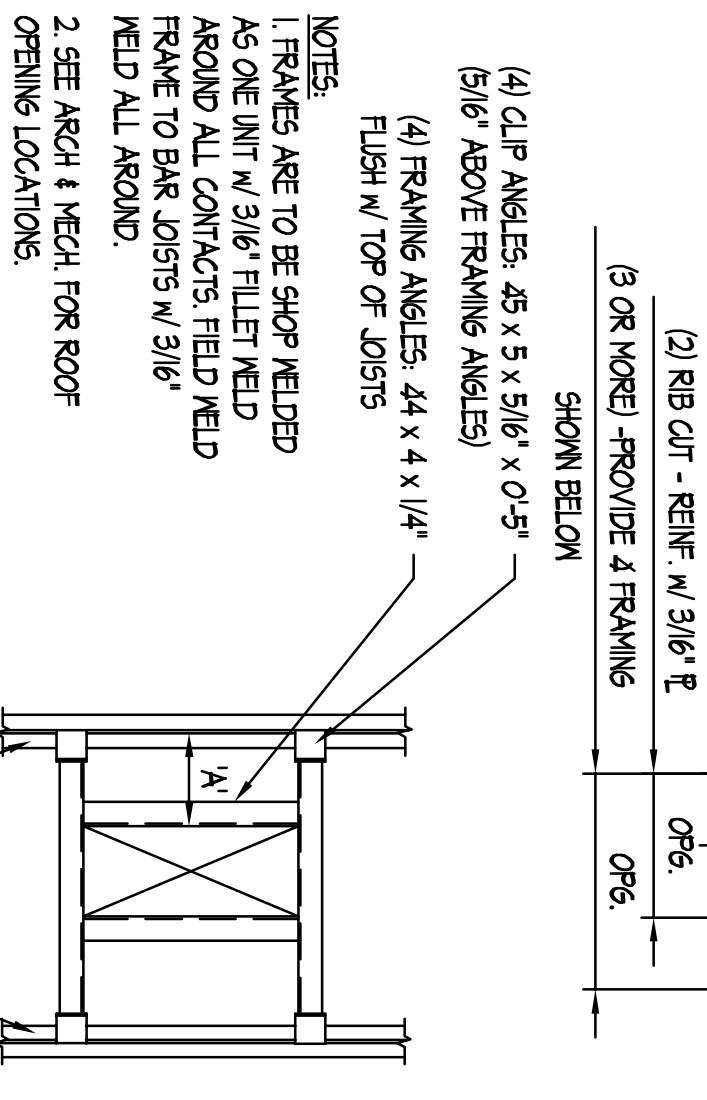
6 FNDTN WALL @ BASEMT SCALE: 1/2" = 1'-0"



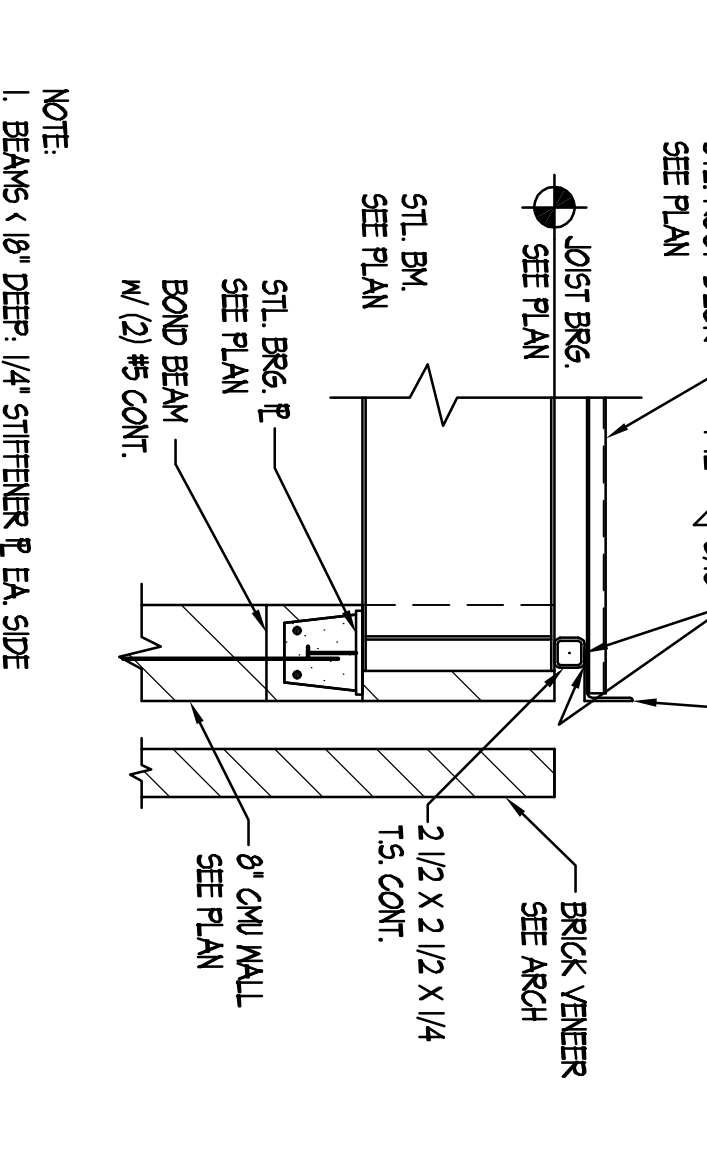
7 JST. BRG. ON MAS. SCALE: 3/4" = 1'-0"



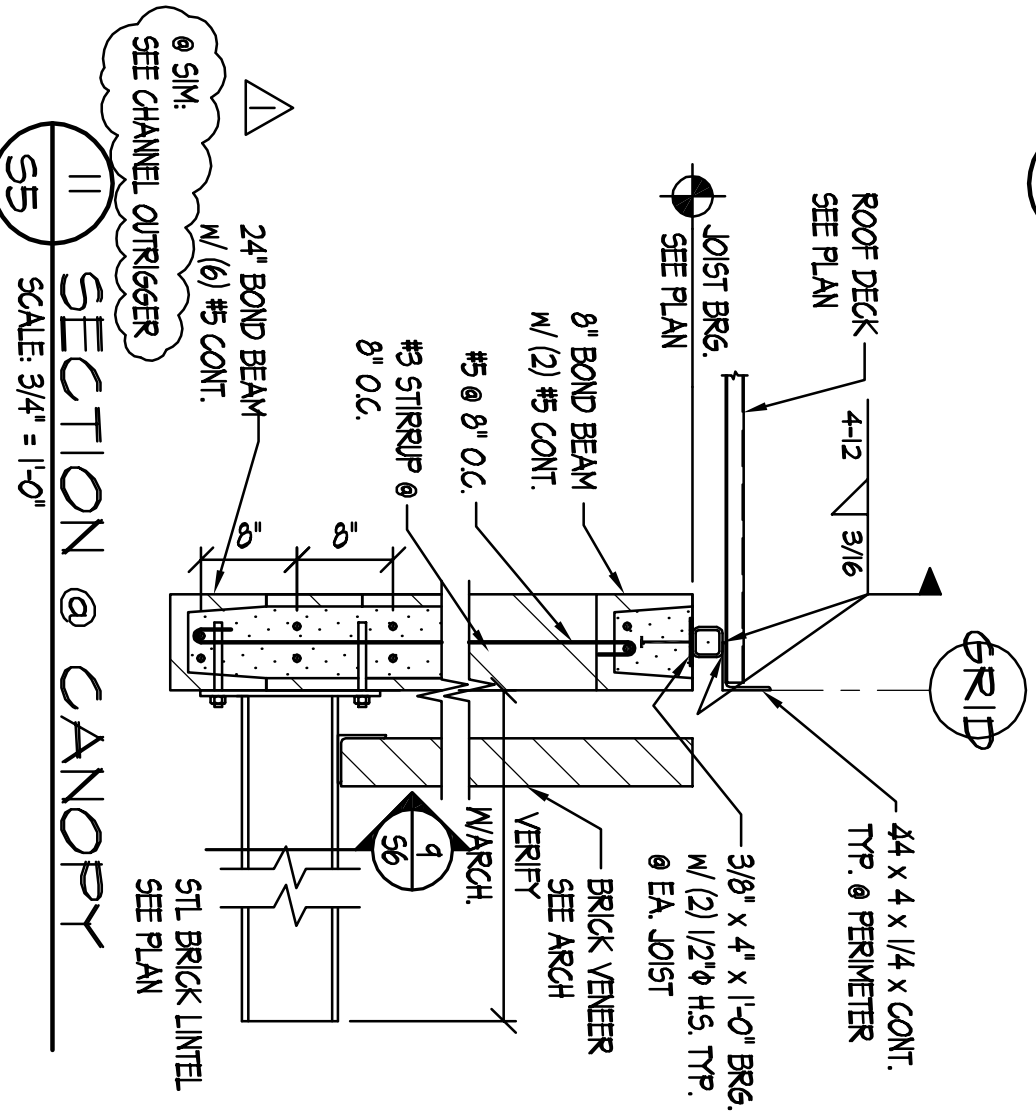
8 DECK BRG. @ EXT. MAS. SCALE: 3/4" = 1'-0"



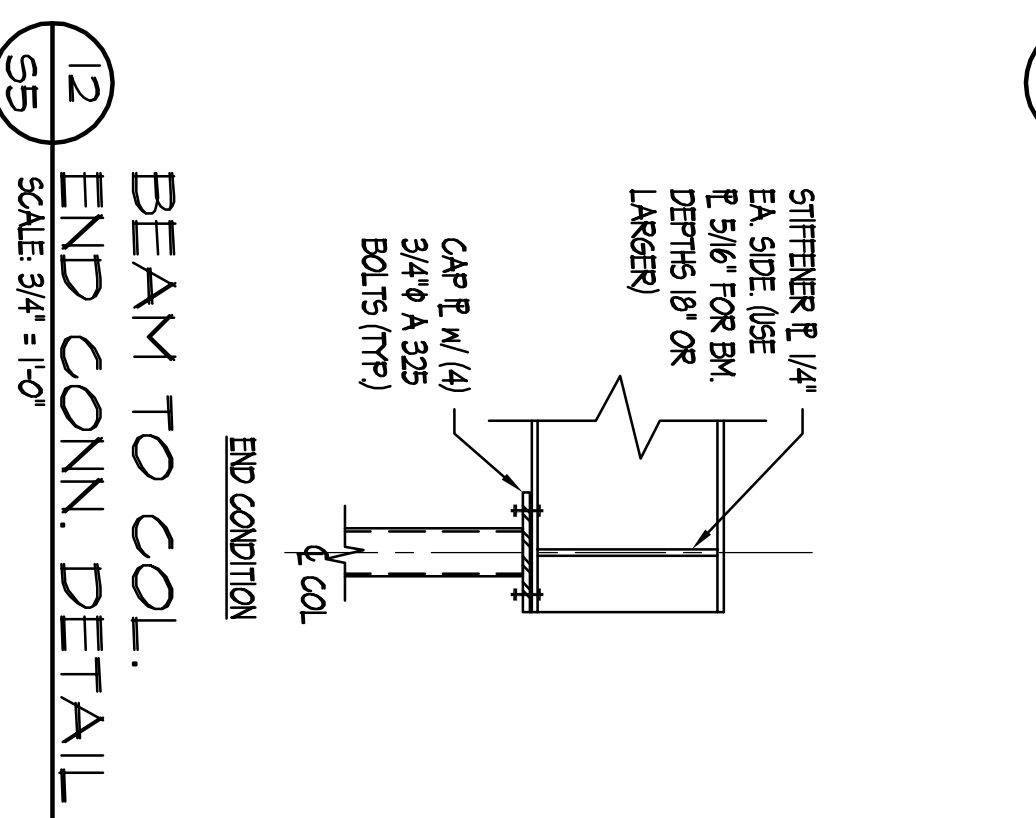
9 ROOF OPENING DETAIL SCALE: NONE



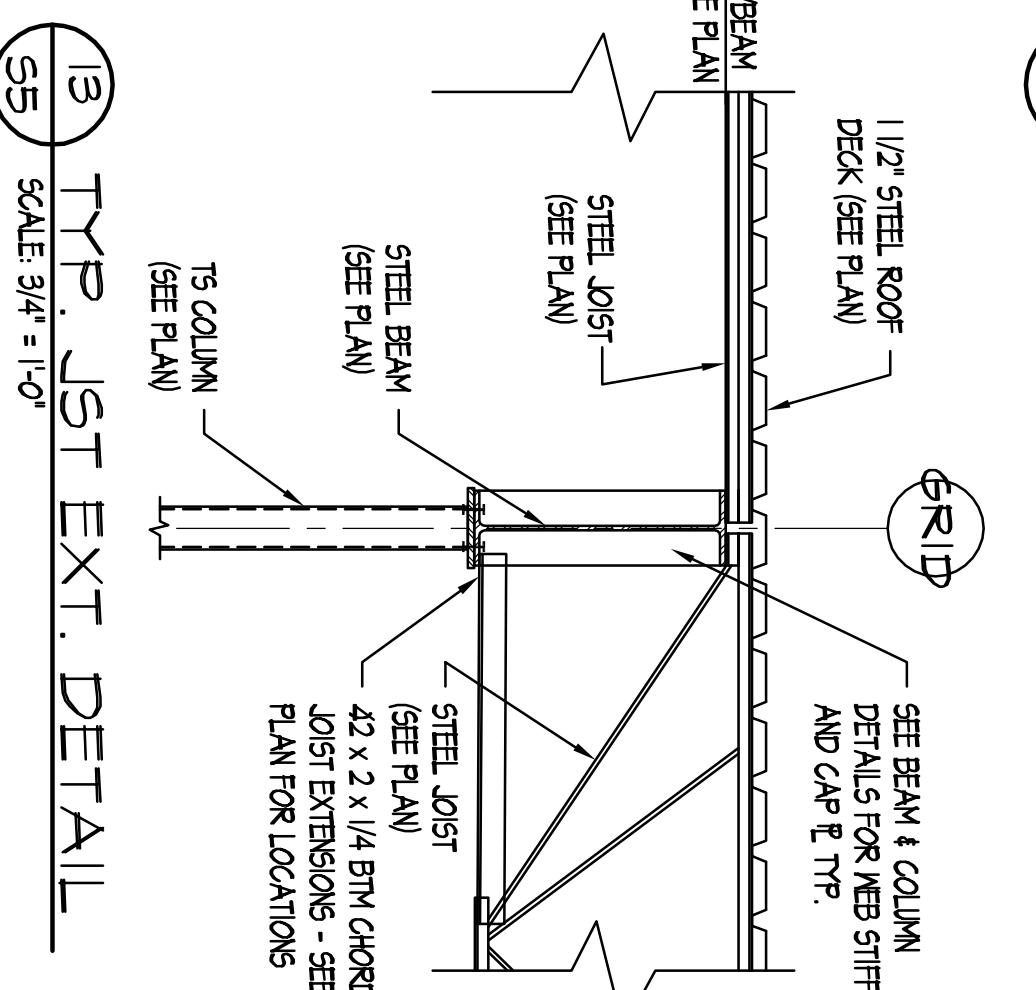
10 BEAM BRG. ON MAS. SCALE: 3/4" = 1'-0"



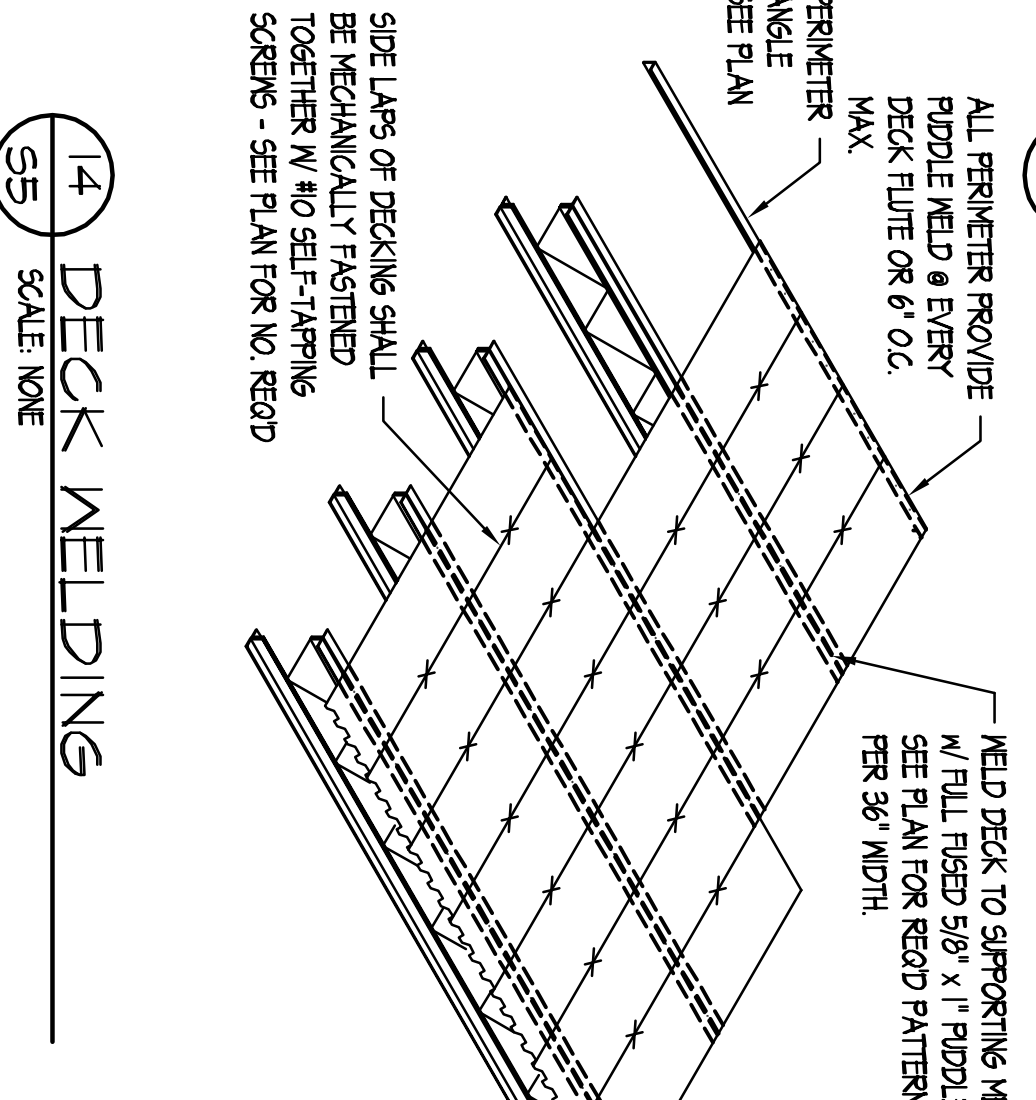
11 SECTION @ CANOPY SCALE: 3/4" = 1'-0"



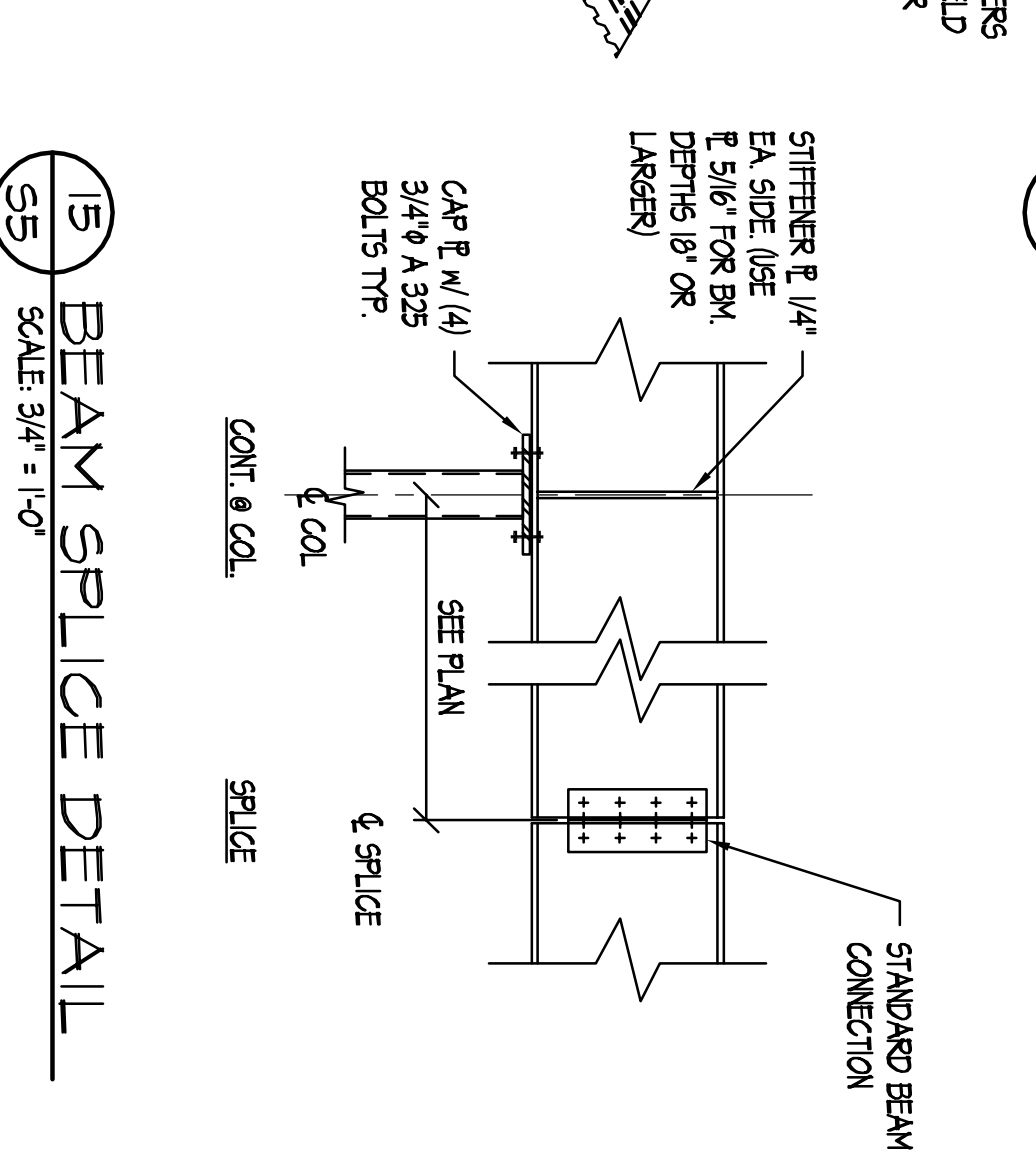
12 BEAM TO COL. END CONN. DETAIL SCALE: 3/4" = 1'-0"



13 TYP. JST EXT. DETAIL SCALE: 3/4" = 1'-0"



14 DECK WELDING SCALE: NONE



15 BEAM SPLICE DETAIL SCALE: 3/4" = 1'-0"

